

Ceiling-Mounted Intelligent Wireless Access Point



WAP310 Series

- 802.11 b/g/n/AC
- MIMO 2x2
- Dual frequency
- Up to 1166Mbps
- Wireless built-in antenna
- High throughput network performance
- Up to 80 concurrent users
- Flexible configuration
- Wireless security
- Enterprise-level applications
- One-stop solution

WAP310 Series Intelligent Wireless Access Point is specially designed for wireless applications in indoor public areas, such as hotels, campus, clubs, restaurants and many other business locations.

WAP310 wireless AP has adopted the latest MIMO technology, which renders a secure, stable and hi-speed wireless network. It is ceiling-mounted, compact, and ergonomically designed so that they can fit in any indoor public areas. They can be used together with in-wall or desktop WAPs to achieve entire WIFI coverage.

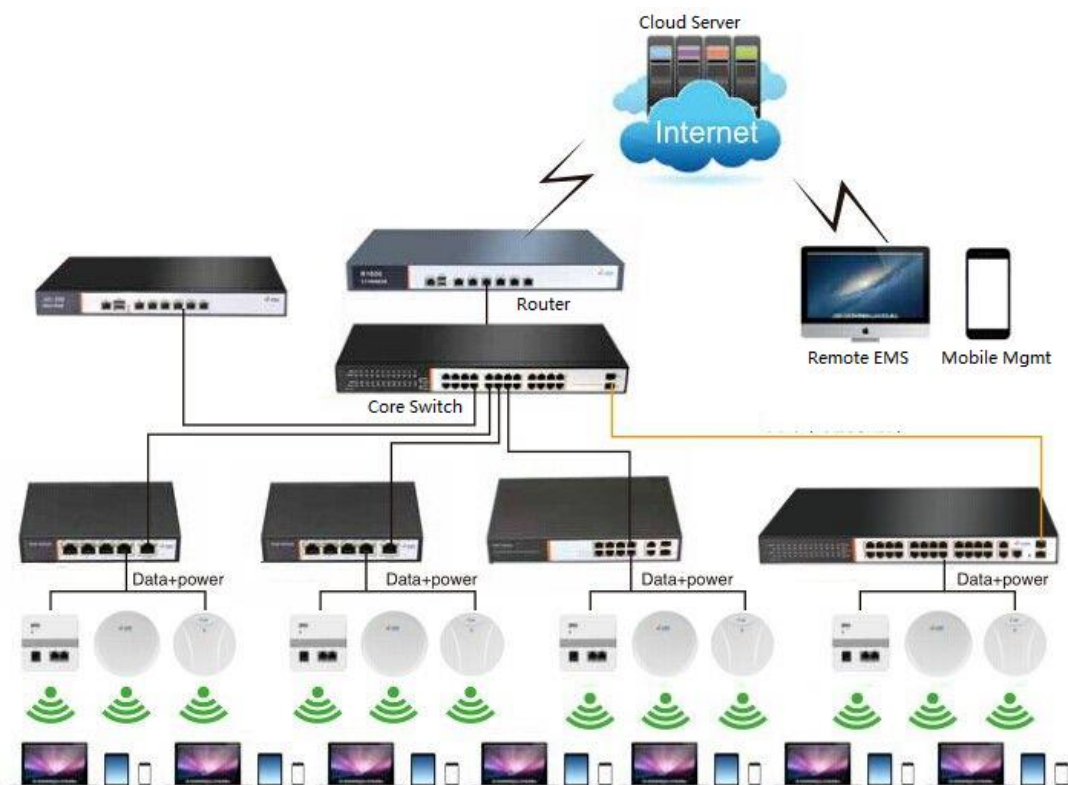
The 802.11n MIMO 2x2 technology enables the transmission rate on the physical layer to reach up to 1166Mbps. It has high throughput so that they can meet the access requirements of up to 200 users and make it possible for 80 users to access concurrently.

Furthermore, the adoption of PoE power supply and Adaptor by Ascent's WAP310 series makes their installation and application more convenient.

Key Features

- 802.11n MIMO technology
- Up to 1166 Mbps
- Up to 200 users (80 concurrent)
- Compact size
- WEP/WPA/WPA2/WPA-psk/WPA2-psk and 802.11i data encryption
- MAC/WEB/802.1x authentication
- Illegal AP checkup
- Wireless user isolation
- Wireless user blacklist/whitelist
- IEEE 802.11n compliant
- Compatible with Ascent's WSC710 series AC controllers

Application Diagram



Specifications

Hardware Specifications

Model	WAP310-FE	WAP310-GE
Interface		
Standard Interfaces	1 × FE port 1 × CON port	1 × GE WAN port 2 × GE LAN ports
Operation Keys	RESET key	RESET key
Wireless Parameters		
Wireless Modules	1 × wireless module 802.11b/g/n MIMO 2 × 2	2 × wireless modules 802.11a/b/g/n/ac MIMO 2 × 2
Performance	≥100 users' access ≥ 50 concurrent users' access @1 M ≥ 16 SSIDs ≥300 M	≥200 users' access ≥ 80 concurrent users' access@2 M ≥ 32 SSIDs ≥1166 M
Working Frequency	2.412 GHz to 2.4835 GHz	2.412 GHz to 2.4835 GHz 5.150 GHz to 5.250 GHz 5.250 GHz to 5.350 GHz 5.470 GHz to 5.725 GHz 5.745 GHz to 5.825 GHz
Antenna	Built-in antenna 3 dBi	Built-in antenna 3 dBi
Output Power	27 dBm	24 dBm/path
Peripheral Parameters		
Size	Φ = 200 mm H = 42 mm	180 mm × 180 mm × 25 mm
Weight	≤280 g	≤300 g
Power Supply	802.3af POE (suggested)	802.3at POE (suggested)
Power Consumption	Peak value ≤ 6W	Peak value ≤ 20 W
Operating Temperature	-10°C to 50°C	-10 °C to 50°C
Operating Humidity	5 % to 95 % RH (non-condensing)	5 % to 95 % RH (non-condensing)

Software Specifications

Item		WAP310-FE	WAP310-GE
Working Modes	FAT AP	Supported	Supported
	FIT AP	Supported	Supported
Protocols	802.1Q VLAN, 4K	Supported	Supported
	802.1p priority queue	Supported	Supported
	IPv6 Passthrough	Supported	Supported
	DHCP snooping	Supported	Supported

Wireless Security	IGMP proxy	Supported	Supported
	DHCP Server	Supported	Supported
	NAT	Supported	Supported
	PPPoE	Supported	Supported
	SNMP	Supported	Supported
	SNTP	Supported	Supported
	WPA-Personal/Enterprise	Supported	Supported
	WPA2-Personal/Enterprise	Supported	Supported
	WEP 64/128-bit Encryption	Supported	Supported
	EAP-SIM/EAP-AKA/EAP-MD5/EAP-TLS/EAP-TTLS/PEAP	Supported	Supported
WLAN Attributes	SSID broadcast disable	Supported	Supported
	MAC address filtering	Supported	Supported
	802.1x RADIUS client with PAP/CHAP	Supported	Supported
	User isolation	Supported	Supported
	Fair receiving time	Supported	Supported
Management Modes	Automatic channel choice	Supported	Supported
	Automatic power control	Supported	Supported
	Wireless terminal identification	Supported	Supported
	5G priority access	N/A	Supported
	Web	Supported	Supported
	Telnet	Supported	Supported
	CLI	Supported	Supported
	AC centralized management	Supported	Supported
	SNMP	Supported	Supported

Ordering Information

Item	Description
WAP310-FE-AC-POE-1	WAP310 ceiling-mounted intelligent WAP (1 FE port, 802.11 a/b/g/n, single-frequency dual-path wireless coverage, MIMO 2x2 built-in antenna, PoE and adaptor power input)
WAP310-GE-AC-POE-1	WAP310 ceiling-mounted intelligent WAP (3 Gigabit ports, 802.11 a/b/g/n/ac, dual-frequency dual-path wireless coverage, MIMO 2x2 built-in antenna, PoE and adaptor power input)

Contact Information



Ascent Communication Technology Ltd

AUSTRALIA

140 William Street, Melbourne
Victoria 3000, AUSTRALIA
Phone: +61-3-8691 2902

CHINA

Unit 1933, 600 Luban Road
200023, Shanghai CHINA
Phone: +86-21-60232616

EUROPE

Pfarrer-Bensheimer-Strasse 7a
55129 Mainz, GERMANY
Phone: +49 (0) 6136 926 3246

HONG KONG SAR

Unit 9, 12th Floor, Wing Tuck Commercial Centre
177 Wing Lok Street, Sheung Wan, HONG KONG
Phone: +852-2851 4722

USA

2710 Thomes Ave
Cheyenne, WY 82001, USA
Phone: +1-203 816 5188

VIETNAM

15 /F TTC Building, Duy Tan Street
Cau Giay Dist., Hanoi, VIETNAM
Phone: +84 243 795 5917

WEB: www.ascentcomtec.com

EMAIL: sales@ascentcomtec.com

Specifications and product availability are subject to change without notice.
Copyright © 2016 Ascent Communication Technology Limited. All rights reserved.
Ver. ACT_WAP310_Datasheet_V1c_Jun_2016