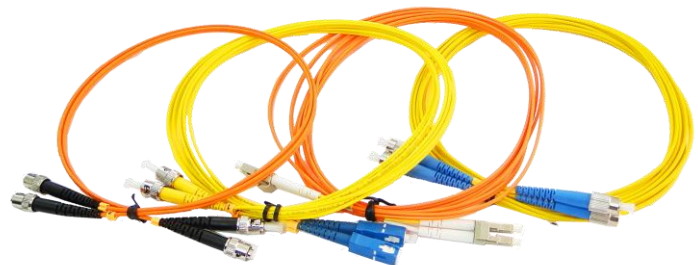


High Quality Fiber Optic Patch Cord



- **High quality zirconia ferrules**
- **Good repeatability and interchangeability**
- **LC/SC/ST/FC/LSH/MTRJ/MU connectors with standard boots are available**
- **LC connectors with 12mm/18mm and SC connectors with 25mm short boots are available**
- **Flame-retardant, rugged and durable jacket**
- **OS2/OM5/OM4/OM3/OM2/OM1 are available**
- **Factory terminated and tested for insertion loss, return loss and end face**

Ascent's fiber optic patch cords make high speed ethernet network equipment connections. They provide superior connections from the workstation to the wall outlet, or from active equipment to the patch panel. These applications include connecting to network interface cards (NIC), or to a fiber hub, router, or switch.

Designed for data center, enterprise, FTTx, LAN and WAN, CATV network, telecom network applications, etc. requiring quick infrastructure deployment such as main, horizontal, and zone distribution areas.

Fiber optic patch cords are ideal for supporting high speed telecommunication network fiber applications. They are manufactured and tested in compliance with TIA 604 (FOCIS), IEC 61754 and YD/T industry standards.

OM1, OM2, OM3, OM4, OM5 or OS2 fiber types are available to meet the demand of Gigabit Ethernet, 10 Gigabit Ethernet and high speed Fiber Channel. Every termination is through rigorous parameter test to ensure the highest network performance.

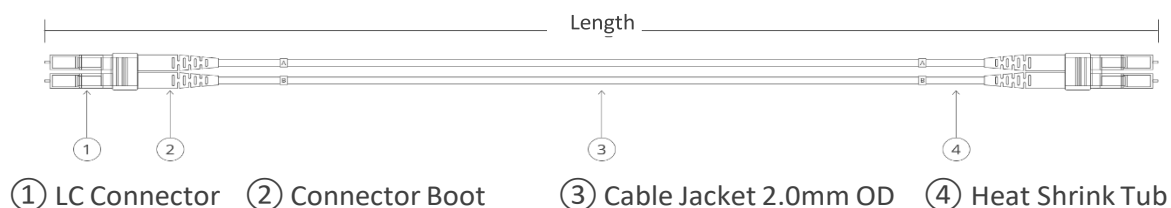
Key Features

- High quality zirconia ferrules
- Good repeatability and interchangeability
- LC/SC/ST/FC/LSH/MTRJ/MU connectors with standard boots are available
- LC connectors with 12mm/18mm and SC connectors with 25mm short boots are available
- Flame-retardant, rugged and durable jacket
- OS2/OM5/OM4/OM3/OM2/OM1 are available
- Factory terminated and tested for insertion loss, return loss and end face

Standard Compliance

- RoHS, ISO 9001, CE, REACH, WEEE Compliant
- TIA 604 (FOCIS)
- TIA/EIA 492AAAE
- IEC 61754
- IEC 60793-2-10
- IEC 61300-3-35
- YD/T1272.1-2003

Technical Drawing



* The total length of this cable is the distance from the connector ferrule at one end to the ferrule at the other end.

Fiber Optic Connectors Guidance

1. LC



Long Form

Lucent Connector/Little Connector/Local Connector

Typical Applications

High-density connections, SFP and SFP+ transceivers,
XFP transceivers

2. SC



Long Form

Subscriber Connector/Square Connector/Standard Connector

Typical Applications

Datacom and telecom; GPON; EPON; GBIC

3. FC



Long Form

Ferrule Connector or Fiber Channel

Typical Applications

Datacom, telecom, measurement equipment,
single mode lasers Datacom

4. ST



Long Form

Straight Tip

Typical Applications

Datacom

5. LSH



Typical Applications

Telecom, DWDM systems

6. MU



Long Form

Miniature Unit

Typical Applications

LANs and telecommunication networks

Specifications

Physical Characteristics

	Name
Connector Types	LC/SC/ST/FC/LSH/MTRJ/MU with Standard Boots; LC 12mm/18mm with Short Boots; SC 25mm with Short Boots
Polish Type	SMF: UPC-UPC; UPC-APC; APC-APC; MMF: UPC-UPC
Connector Ferrule	Zirconia Ceramic
Cable Outside Diameter	Duplex: 1.6/2.0/3.0mm, Simplex: 0.9/2.0/3.0mm
Interchangeability	≤0.2dB
Vibration	≤0.2dB

Mechanical Characteristics

	Description
Fiber Type	Standard Boots: OS2/OM5/OM4/OM3/OM2/OM1; Short Boots: OS2/OM4/OM3
Fiber Count	Duplex/Simplex
Cable Jacket	PVC (Riser/OFNR)/LSZH/Plenum (OFNP)
Fiber Grade	SMF: G.657.A1/ G.657.A2; OM5/OM4/OM3/OM2: Bend Insensitive; OM1: G.651

Fiber Mode	Connector Type	Connector Color	Jacket Color
OS2	LC	Blue/Green Black	Yellow
	SC		
	ST		
	FC		
OM1/OM2	LC	Beige	Orange
	SC	Black	
	ST		
OM3	LC	Beige	Aqua
	SC	Aqua	
	ST	Black	
OM4	LC	Beige	Aqua
	SC	Beige	Aqua
OM5	LC	Beige	Lime Green
Vibration	≤0.2dB	≤0.2dB	≤0.2dB
Minimum Bend Radius		SMF	MMF
	OD 2.0/3.0mm	10/5D	20/10D
Fiber Cable (Dynamic/Static)	OD 1.6mm	10/5D	-
	OD 0.9mm	10mm	OM1: 15mm Others: 7.5mm
	OD 0.9/2.0/3.0mm	G.657.A1: 10mm G.657.A2: 7.5mm	OM1: 15mm Others: 7.5mm
Fiber Core	OD 1.6mm	G.657.A1: 10mm	-

Tensile Strength (Long Term/Short Term)

OD 3.0mm

OD 2.0mm

OD 1.6mm

OD 0.9mm

Duplex

120/225N

90/150N

90/150N

-

Simplex

80/150N

60/100N

-

3/6N

Optical Characteristics

Connector Insertion Loss

Connector Return Loss

Attenuation at 1310nm

Attenuation at 1550nm

Attenuation at 850nm

Attenuation at 1300nm

Description

LC/SC/ST/FC/LSH/MU/MTRJ≤0.3dB

SMF: UPC≥50, APC≥60 (LC/SC/ST/FC/MU/MTRJ), UPC≥55, APC≥75 (LSH) MMF: UPC≥30 (LC/SC/ST/FC/LSH/MU), UPC≥35 (MTRJ)

G.657.A1: 0.36dB/km

G.657.A2: 0.4dB/km

G.657.A1: 0.22dB/km

G.657.A2: 0.25dB/km

3.0dB/km

1.0dB/km

Environmental Characteristics

Operating Temperature

Storage Temperature

Description

-20~70°C

-40~80°C

Cable Length Tolerances

Cable Length

Duplex/Simplex

Multifiber

L≤0.5m

+5cm/-0cm

+8cm/-0cm

0.5m<L≤5m

+10cm/-0cm

+12cm/-0cm

5m<L≤10m

+15cm/-0cms

+15cm/-0cm

10m<L≤30m

+20cm/-0cm

+20cm/-0cm

30m<L≤100

+1%/-0cm

+1%/-0cm

L>100m

+1.5%/-0cm

+1.5%/-0cm

Ordering Information

PCD series Patch Cord Ordering Information								
PCD-XX-		XX-	XXX-	X	X-	X-	XXX	
↓			↓		↓		↓	
	Connector A		Fiber Mode		Cable Diameter		Cable Length	
SA	SC/APC		OS2		2	2mm	010	10 meters
SU	SC/UPC		OM1		3	3mm	050	50 meters
FA	FC/APC		OM2		B	900µm jacketed	100	100 meters
UF	FC/UPC		OM3				500	500 meters
LA	LC/APC		OM4					
LU	LC/UPC		OM5					
PL	LC/PC							
↓				↓		↓		
	Connector B		Fiber Count		Cable Jacket			
SA	SC/APC	S	Simplex		LSZH			
SU	SC/UPC	D	Duplex		OFNP			
FA	FC/APC				PVC			
UF	FC/UPC							
LA	LC/APC							
LU	LC/UPC							
PL	LC/PC							

References Part Numbers*

*Contact your local sales representatives for more configuration

PCD-PL-PL-OS2-D2-LSZH-500

Optical Patch Cord LC/PC to LC/PC, Single Mode Fiber, Duplex,
2mm, LSZH 500m

Contact Information



Ascent Communication Technology Ltd

AUSTRALIA

140 William Street, Melbourne
Victoria 3000, AUSTRALIA
Phone: +61-3-8691 2902

CHINA

Unit 1907, 600 Luban Road
200023, Shanghai CHINA
Phone: +86-21-60232616

EUROPE

Pfarrer-Bensheimer-Strasse 7a
55129 Mainz, GERMANY
Phone: +49 (0) 6136 926 3246

HONG KONG SAR

Unit 9, 12th Floor, Wing Tuck Commercial Centre
177 Wing Lok Street, Sheung Wan, HONG KONG
Phone: +852-2851 4722

USA

2710 Thomes Ave
Cheyenne, WY 82001, USA
Phone: +1-203 816 5188

VIETNAM

15 /F TTC Building, Duy Tan Street
Cau Giay Dist., Hanoi, VIETNAM
Phone: +84 168 481 8348

WEB: www.ascentcomtec.com

EMAIL: sales@ascentcomtec.com

Specifications and product availability are subject to change without notice.
Copyright © 2023 Ascent Communication Technology Limited. All rights reserved.
Ver. ACT_Fiber_Patchcord_Datasheet_V1d_Jan_2022