



AT5000 External Modulation Optical Transmitter

**Quick Reference
Guide**

Revision I

ACT AT5000 External Modulation Optical Transmitter

Quick Reference Guide

ACT Document Number: ACT AT5000 External Modulation Optical Transmitter

Quick Reference Guide Revision I

Copyright © 2023 Ascent Communication Technology Limited.

All rights reserved. Reproduction in any manner whatsoever without the express written permission of Ascent Communication Technology is strictly forbidden.

This document is produced to assist professional and properly trained personnel with installation and maintenance issues for the product. The capabilities, system requirements and/or compatibility with third-party products described herein are subject to change without notice.

For more information, contact ACT: support@ascentcomtec.com



Revision History

Revision	Date	Reason for Change
A	01/23/2018	Initial release
B	02/20/2018	Update Sections
C	02/22/2018	Minor updates
D	05/27/2018	Updated specifications
E	09/03/2019	Updated section 2.4
F	04/27/2020	Added section 9
G	09/10/2020	Updated pictures
H	12/08/2022	Updated various sections
I	11/15/2023	Update section 5.1

Table of Contents

1 Precautions	5
2 Introduction	6
2.1 Overview	6
2.2 Features	6
2.3 Specifications	7
2.4 Models and Options.....	8
3 Installation	9
3.1 Equipment Inventory	9
3.2 Packaging and Transportation	9
3.3 Power and Cooling Requirements	9
3.4 Installation and Adjustment	10
3.5 Front Panel Operation	11
3.6 Rear Panel Operation.....	12
4 Technical Description	13
4.1 Overview	13
4.2 Physical Description	13
4.3 ITU Frequency Grid	14
5 Software Description – Operation	15
5.1 Web Management	15
6 Setup Menu.....	22
7 OMI Adjustment.....	25
7.1 The Request on RF Input Level	25
7.2 AGC Condition	25
7.3 AGC Operation	25
8 SBS Adjustment Steps	25
8.1 SBS Suppression	26
9 Optimal Input Signal Level	27

1 Precautions



Exposure to class 1M laser radiation is possible. Access should be restricted to trained personnel only. Do not view exposed fiber or connector ends when handling optical equipment.

- Ensure adequate cooling and ventilation as specified.
- The installation and operation manual should be read and understood before units are put into use.
- Always replace protective caps on optical connectors when not in use.
- The typical connectors fitted are SC/APC 8°. **Note:** 8° angle polished connectors must be used.

Cleaning

Use only a damp cloth for cleaning the front panel. Use a soft dry cloth to clean the top of the unit.

Do not use spray cleaner of any kind.

Grounding

The XMOD2 Transmitter should have good grounding with grounding resistance $<4 \Omega$. According to the international standard, 220V plug in adopts tri-wire rule and the middle wire is the grounding wire.

Before connecting circuit, please use proper electric wire (#20AWG and more) to connect the grounding screw and the grounding frame. When use DC input power supply, the equipment chassis must be grounded.

Overloading

Overloading wall outlets and extension cords can result in a risk of fire or electric shock.

Use approved electrical cords.

Damage requiring service

Unplug unit and refer servicing only to Ascent Communication Technology qualified service personnel.

Servicing

Do not attempt to service this unit yourself. Refer all servicing only to Ascent Communication Technology qualified service personnel.

2 Introduction

2.1 Overview

AT5000 1RU Dual Output 1550nm Externally-Modulated (XMOD2) Laser Transmitter offers a flexible, medium and long distance and scalable optical transmission for high quality analog and digital video in CATV networks.

AT5000 XMOD2 1550nm series transmitters are designed with two optical output ports with power from 3 dBm, 6 dBm, 9 dBm, and 10 dBm. These transmitters are equipped with field adjustable Stimulated Brillouin Scattering (SBS) suppression from 13 dBm to 19 dBm. AT5000 XMOD2 series simplifies the application by offering chirp-free operation with confined optical line width and maintain excellent distortion performance CNR, CSO and CTB across the entire network.

AT5000 XMOD2 transmitter provides low dispersion transmission with intuitive front panel LCD display to make operator's life easier. The optical transmitter is packaged in a self-contained 19" sub-rack of 1 RU with dual main power supplies and SNMP management.

Together with ACT 1RU EDFA optical amplifiers, the AT5000 XMOD2 provides an ideal long-distance video and short, medium video overlay solution in high density FTTX networks to bring the CATV services to business and home premises.

2.2 Features

- High performance on CSO, CTB with RF pre-distortion circuit
- Dual optical output power up to 10dBm
- Suitable for long distance 1550 nm DWDM Video transmission applications
- Suitable for short, medium distance FTTH applications
- Low noise DFB continuous wave laser, reduce the dispersion effect
- Optimized models for 60 PAL or 89 PAL channels, 80 NTSC channels or 110 NTSC channels
- Dual redundant hot-swappable AC or DC power supplies
- Field-adjustable Stimulated Brillouin Scattering (SBS) suppression for optimized CSO
- Front-panel LCD for local monitoring of transmitter status
- Local or remote monitoring and configuration
- SNMP/HTTP monitoring, management and control

2.3 Specifications

AT5000 XMOD2 1550nm Externally-Modulated (XMOD2) Laser Transmitter - 19" 1RU

Items	Unit	Min.	Typ.	Max.	Notes
Optical					
Wavelength	nm	1540		1563	Compatible with ITU wavelength
Output Port No.		1	2		
Each Output	dBm	5		10	1 dBm/step
Laser linewidth	MHz	0.35			
SMSR	dB	45	50		
RIN	dB/Hz			-160	20 MHz to 1002 MHz
Optical Return Loss	dB	50			
Fiber Connector		SC/APC			FC/APC, LC/APC Optional
RF					
Bandwidth	MHz	47		1218	870 MHz / 1002 MHz optional
Input Level	dBμV	75	80	85	AGC
MGC ATT	dBμV	0		15	In MGC
Unflatness	dB	-0.75		+0.75	47 to 1002MHz
Return Loss	dB	16			47 to 1002MHz
Input Impedance	Ω		75		
RF Connector		F Metric/ Imperial			Optional
Link					
Test Channels		PAL-D/59CH	PAL-D/99CH		
CNR1	dB	≥53.0	52.0		TX to RX, 0 dBm input to node
CNR2	dB	≥51.0	50.0		65K fiber, 0 dBm input to node
CTB	dB	≥65			
CSO	dB	≥65			
SBS	dBm	13		19	Adjustable, Step 0.1dB
General					
Network Management		SNMP, WEB supported			
Power Supply	V	90		265	AC
		-72		-36	DC
Power Consumption	W			50	Dual power supply, 1+1back up
Working Temperature	°C	-5		+65	Auto case temp control
Storage Temperature	°C	-40		+85	
Working Relative Humidity	%	5		95	
Dimensions (W×L×H)	mm	450 × 483 × 44			
Weight	kg	7.4			

Note: Measured in a typical system configuration for the nominated channel numbers and nominated fibre lengths for each model at 25 °C ambient temperature.

2.4 Models and Options

AT5000 Series 1RU Dual Output XMOD2 TX Ordering Information																																							
AT-	5X-	XMOD2-	XX-	X-	XX-	XX	X																																
<table><tr><th></th><th>Bandwidth</th></tr><tr><td>50</td><td>870 MHz</td></tr><tr><td>51</td><td>1002 MHz</td></tr><tr><td>512</td><td>1218 MHz</td></tr></table>			Bandwidth	50	870 MHz	51	1002 MHz	512	1218 MHz	<table><tr><th></th><th>Output Wavelength</th></tr><tr><td>00</td><td>1550 nm ± 5 nm</td></tr><tr><td>21</td><td>ITU CH 21</td></tr><tr><td>23</td><td>ITU CH 23</td></tr><tr><td>25</td><td>ITU CH 25</td></tr><tr><td>xx</td><td>ITU CH XX</td></tr></table>			Output Wavelength	00	1550 nm ± 5 nm	21	ITU CH 21	23	ITU CH 23	25	ITU CH 25	xx	ITU CH XX	<table><tr><th></th><th>Optical Connector</th></tr><tr><td>SC</td><td>SC/APC</td></tr><tr><td>FC</td><td>FC/APC</td></tr></table>			Optical Connector	SC	SC/APC	FC	FC/APC	<table><tr><th></th><th>Power Supply</th></tr><tr><td>1</td><td>Single PS</td></tr><tr><td>2</td><td>Dual PS</td></tr></table>			Power Supply	1	Single PS	2	Dual PS
	Bandwidth																																						
50	870 MHz																																						
51	1002 MHz																																						
512	1218 MHz																																						
	Output Wavelength																																						
00	1550 nm ± 5 nm																																						
21	ITU CH 21																																						
23	ITU CH 23																																						
25	ITU CH 25																																						
xx	ITU CH XX																																						
	Optical Connector																																						
SC	SC/APC																																						
FC	FC/APC																																						
	Power Supply																																						
1	Single PS																																						
2	Dual PS																																						
				<table><tr><th></th><th>Output Power</th></tr><tr><td>6</td><td>6 dBm</td></tr><tr><td>8</td><td>8 dBm</td></tr><tr><td>9</td><td>9 dBm</td></tr><tr><td>10</td><td>10 dBm</td></tr></table>			Output Power	6	6 dBm	8	8 dBm	9	9 dBm	10	10 dBm																								
	Output Power																																						
6	6 dBm																																						
8	8 dBm																																						
9	9 dBm																																						
10	10 dBm																																						
						<table><tr><th></th><th>Power Supply</th></tr><tr><td>AC</td><td>90 to 265 VAC Australia Plug</td></tr><tr><td>DC</td><td>30 to 72 VDC</td></tr><tr><td>A3</td><td>90 to 265 VAC with Continental EU Plug</td></tr><tr><td>A4</td><td>90 to 265 VAC with North America Plug</td></tr></table>			Power Supply	AC	90 to 265 VAC Australia Plug	DC	30 to 72 VDC	A3	90 to 265 VAC with Continental EU Plug	A4	90 to 265 VAC with North America Plug																						
	Power Supply																																						
AC	90 to 265 VAC Australia Plug																																						
DC	30 to 72 VDC																																						
A3	90 to 265 VAC with Continental EU Plug																																						
A4	90 to 265 VAC with North America Plug																																						



Note

Contact ACT for additional product variations on output power, 1 GHz, specific ITU channels, optical connectors etc.

3 Installation

3.1 Equipment Inventory

On receiving your new AT5000-XMOD2, you should carefully unpack and examine the contents for loss or damage that may have occurred during shipping. Refer to warranty registration if loss or damage has occurred. The AT5000-XMOD2 should consist of the following:

Qty	Description
1	AT5000-XMOD2 Unit
1	Key for switching laser ON / OFF
1	Power supply cord
1	Optional Product User Manual (includes individual test sheet)

3.2 Packaging and Transportation

Keep all AT5000-XMOD2 packing boxes and packaging for future transport.

Use only the original AT5000-XMOD2 packaging when transporting. This packaging has been specifically designed to protect the equipment.

3.3 Power and Cooling Requirements

The AT5000-XMOD2 requires a mains input of 90 V_{AC} to 265 V_{AC} at 50 to 60 Hz or 30 V_{DC} to 72 V_{DC}. The unit will automatically adjust the power conversion for inputs within these ranges, with no switch setting or other user intervention. Power consumption of the unit is 50 watts maximum.

The transmitter is designed to operate with an ambient temperature of 0 °C to 50 °C with humidity up to 95 %. Free ambient air should be maintained around all sides of the unit. Care should be taken to ensure that the air flow around the unit is unrestricted.

The AT5000-XMOD2 should have a minimum ventilation clearance of 1 RU above and below the transmitter.

**Warning**

DO NOT expose AT5000-XMOD2 to conditions which would permit condensation to form on the inside of the transmitter.

DO NOT operate AT5000-XMOD2 outdoors.

3.4 Installation and Adjustment



Warning

Exposure to class 1M laser radiation is possible. Access should be restricted to trained personnel only. Do not view exposed fiber or connector ends when handling optical equipment.

The following steps explain how the AT5000-XMOD2 is to be installed.

1. Unpack the transmitter and inspect the unit as stated in **Section 3.1**.
2. Locate the transmitter in a 19" cabinet ensuring adequate ventilation and space for accessing the rear ports and front-panel keypad.
3. Before connecting AC power to the unit, make sure that the LASER ON/OFF key is switched **OFF** (front panel).
4. Use the supplied power cord to apply mains power to the transmitter.
5. Switch the AC or DC power ON (switch located on the rear panel).

The ALARM LED will light red.

The LCD will light and display "Model: AT5000-XMOD2" and "KEY OFF" on start up.



6. Switch on the laser using the key switch.

Front panel shows "KEY ON...", Laser status LCD turns green from red, the unit enters self-checking, after checking it enters working status, display " Descriptor"



Warning

Allow **15 minutes** for the transmitter to reach its stable operating temperature. **Do not** connect the RF/optical ports to the network or start aligning the system until then.

7. Before connecting an RF signal, check that the power input level is within the acceptable range. Refer to **Section 2** for details.

8. Connect a matrix generator or head-end RF signal.



Note

The default control mode is AGC. The modulation control mode displayed in the main menu is RF Mode = AGC.

9. Connect a fiber patch-cord from optical port **OPT. OUT 1** to an optical power meter and verify the LCD reading matches your power meter reading.

When the ALARM LED shows green, the transmitter is ready for full operation.

3.5 Front Panel Operation



Port	Item	Description
1	Mounting Points	Holes for securing unit to rack
2	LASER ON/OFF	Key switch for laser activation
3	LASER	Laser indicator GREEN – Output power is normal RED – Abnormal status
4	RF	RF indicator GREEN – Normal operation RED – RF input is too low or too high
5	TEMP	Temperature indicator GREEN – Temperature is normal RED – Operating temperature is too low or too high
6, 7	PWR1/PWR2	Power 1 / Power 2 indicators GREEN – Two-way switch power supply is working YELLOW – One-way power supply is working RED – Abnormal status
8	VFD/LED	VFD/LED display for optical transmitter parameters such as model number and operation status
9, 10	AGC/MGC	AGC/MGC indicator Displays AGC/MGC working status
11	KEYPAD	Keypad used to scroll through menu items on transmitter display
12	ENT	Enter button
13	RF TEST	Input level test (-20 dBm)

3.6 Rear Panel Operation

AC



DC



Port	Item	Description
1	FAN	Intelligent fan, begins to run when the chassis temperature reaches 32 °C to 35 °C (set by
2	RF IN	RF signal input
3	OPT OUTPUT	Optical signal output
4	CONSOLE	Console for computer network management
5	ETHERNET	Ethernet port, compliant with CNMP standard interface
6, 7	PS2/PS1	Power supply 2 and power supply 1 outlet

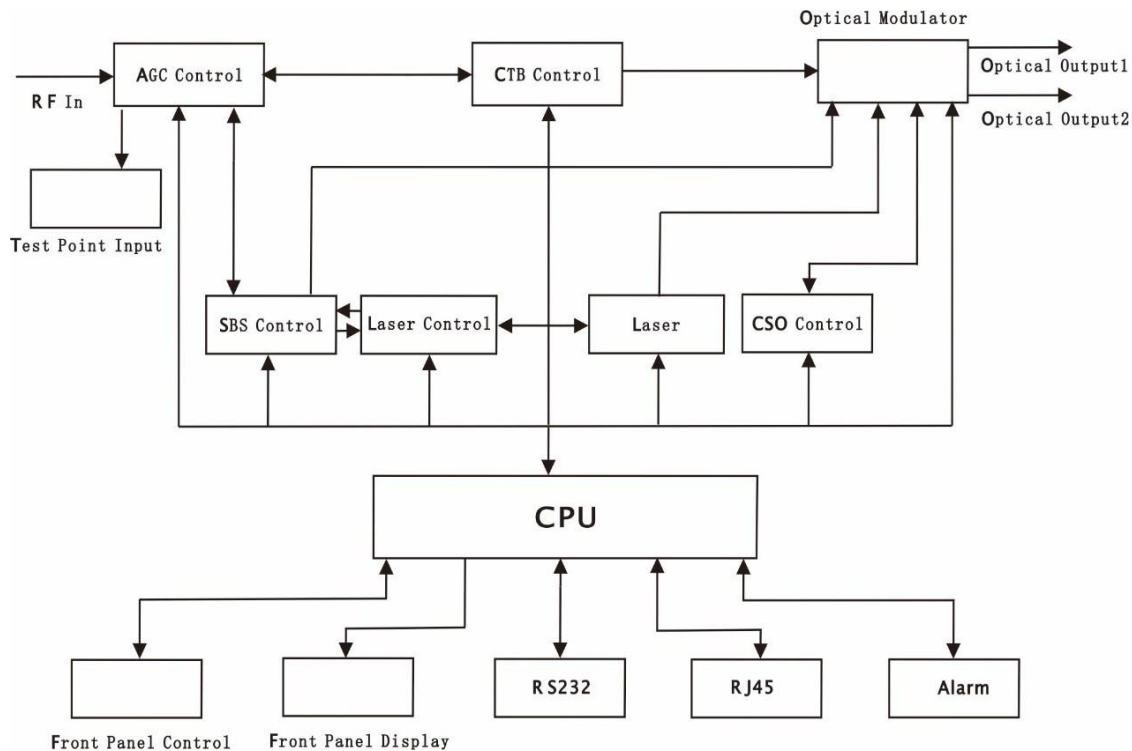


Note

Product appearance may vary with model options.

4 Technical Description

4.1 Overview



4.2 Physical Description

The unit is housed in a 19" rack, 1 RU height. Status indicators and control keys are located on the front panel along with an RF monitor port. The front panel provides an LCD display for comprehensive status information and user interface. The rear panel contains the optical interconnects, power, and data interface connectors.

The RF test port on the front panel is -20 dB from the modulating signal level. This is just after the internal AGC functional block. This signal is constant when the AGC circuit is functioning normally. Refer to the specification for typical levels. The output impedance of this port is 75 Ω , with an F-type connector.

The rear panel also contains the two optical ports, which are typically SC/APC bulkhead connectors.

The power interface, is a standard 3-prong line cord, with hot, neutral, and chassis ground. The metal chassis of the transmitter is tied to ground.

4.3 ITU Frequency Grid

The following table contains the ITU frequency plan with corresponding wavelengths available to the AT5000-XMOD2.

Channel	ITU Freq. (THz)	Avail. ITU Wavelengths (nm)	Channel	ITU Freq. (THz)	Avail. ITU Wavelengths (nm)
Order Code			Order Code		
60	196.0	1529.55	40	194.0	1545.32
59	195.9	1530.33	39	193.9	1546.12
58	195.8	1531.12	38	193.8	1546.92
57	195.7	1531.90	37	193.7	1547.72
56	195.6	1532.68	36	193.6	1548.51
55	195.5	1533.47	35	193.5	1549.32
54	195.4	1534.25	34	193.4	1550.12
53	195.3	1535.04	33	193.3	1550.92
52	195.2	1535.82	32	193.2	1551.72
51	195.1	1536.61	31	193.1	1552.52
50	195.0	1537.40	30	193.0	1553.33
49	194.9	1538.19	29	192.9	1554.13
48	194.8	1538.98	28	192.8	1554.94
47	194.7	1539.77	27	192.7	1555.75
46	194.6	1540.56	26	192.6	1556.55
45	194.5	1541.35	25	192.5	1557.36
44	194.4	1542.14	24	192.4	1558.17
43	194.3	1542.94	23	192.3	1558.98
42	194.2	1543.73	22	192.2	1559.79
41	194.1	1544.53	21	192.1	1560.61

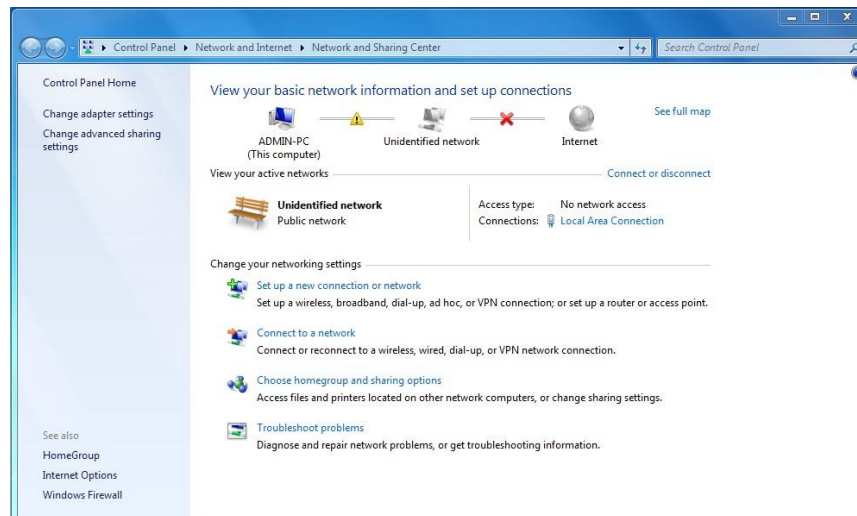
5 Software Description – Operation

5.1 Web Management

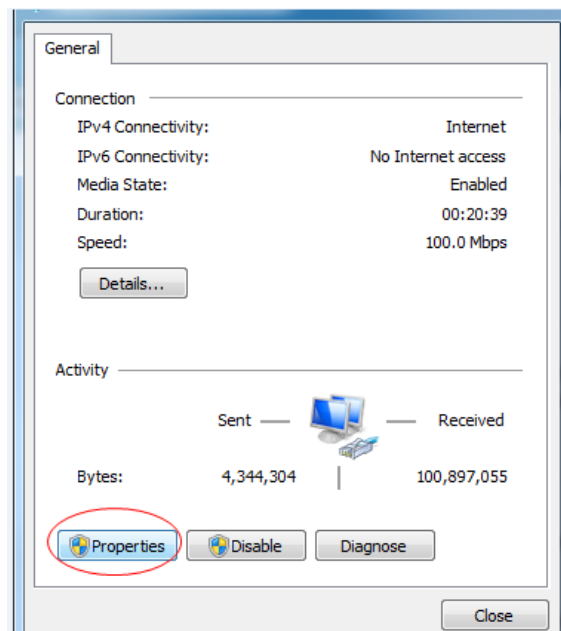
The user can use web browser to check the working condition and basic parameters of the amplifier, it supports IE, Chrome, Firefox, Opera and other main web browser. The following example are based on Opera browser.

1. Find the IP add in the machine, The default IP address is 192.168.0.22, set the IP add of the PC in the same range as following:

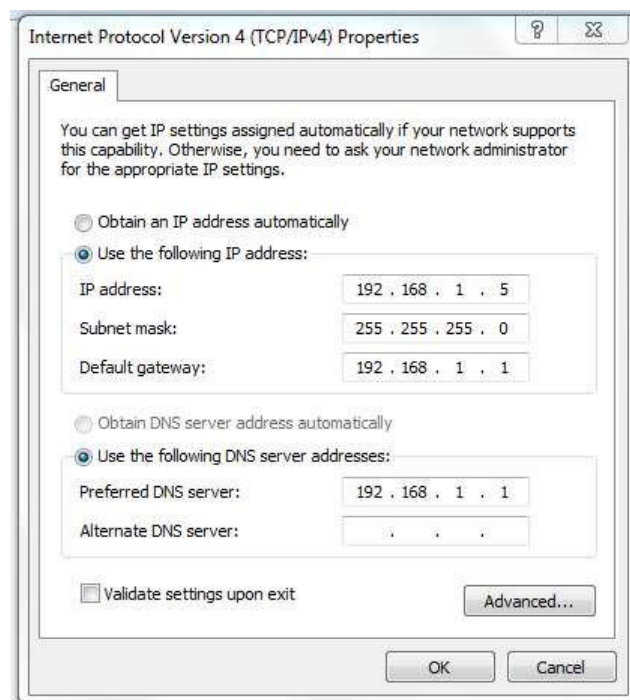
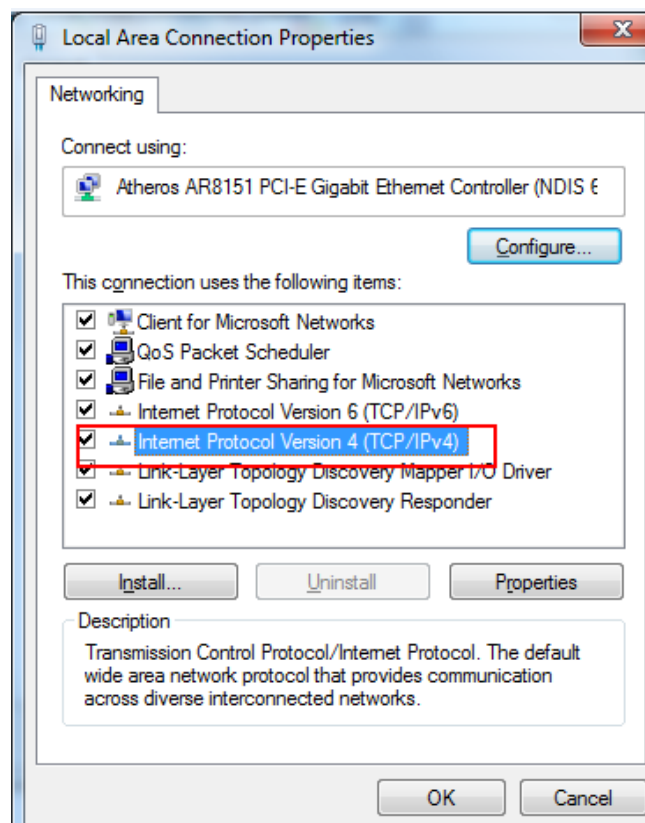
Step 1: Open local Area Connection setting:



Step 2: Set Properties



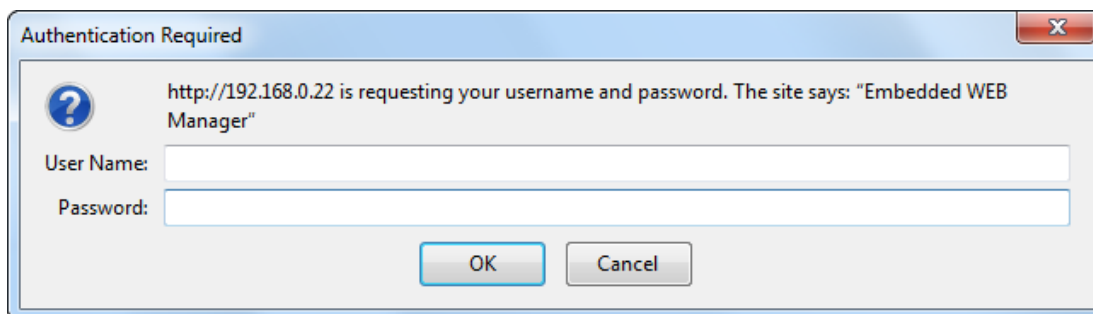
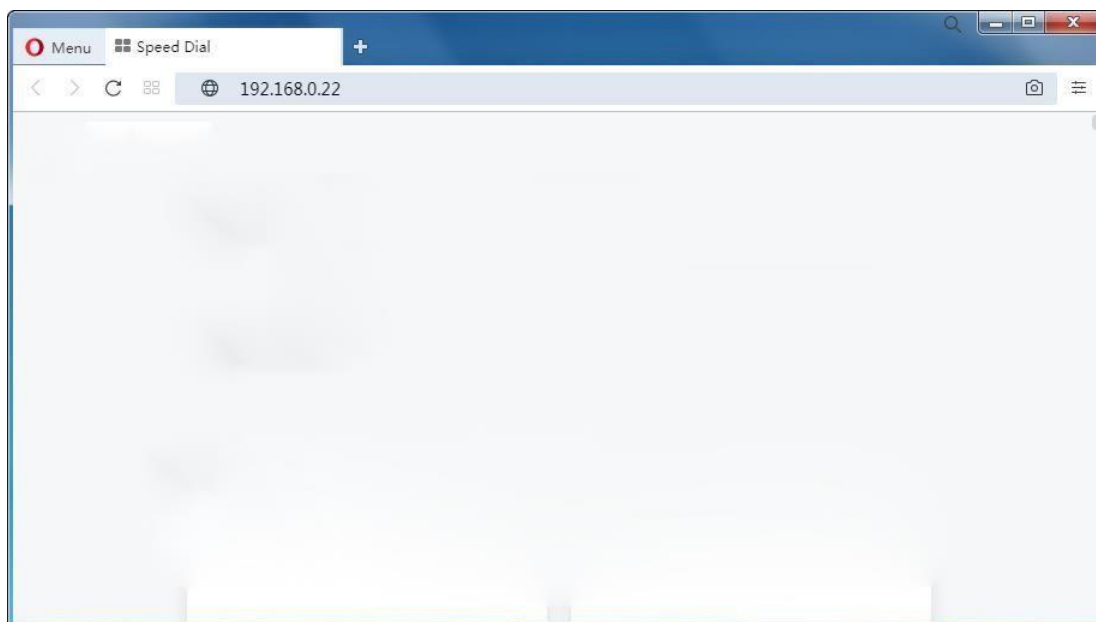
Step 3: Set the PC IP address in the same range with device IP address, so that the computer can access the device.



2. Open web browser, input the IP add and login in. The IP factory setting is 192.168.0.22.

User Name: admin

Password: ascent



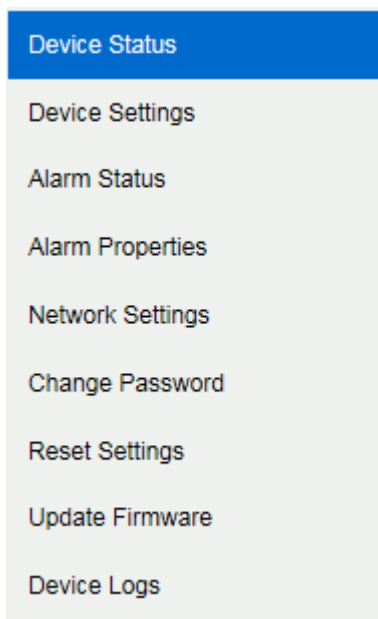
First Time Log-in to WEB Manager

The username/password for the first time log-in to the WEB Manager is **admin/ascent**, we recommend that the customer change the username and password as soon as possible.

Restore Factory Setting

If in future you forget the user name and password you set up, or for any other reasons in need to change to default, the product can be restored to factory setting, click Reset Settings on the left-bar, then click Restore Factory, the setting will revert to default state, and the username and password will become **admin/123456**.

3. The web management consist of five submenus. Items guide on the left, click to enter.



Page Navigation Bar

Device Status

Device Model: AT-51-XMOD2-00-07-SC
 Serial Number: 230713127099
 Device Version: 5.2.0
 Unit Temperature: 30.8 °C
 Power Supply 1: Normal
 Power Supply 2: Normal

Output Power1: 7.5 dBm Output Power2: 7.2 dBm
 RF Input Level(rms): 00.0 dBuV Laser Wavelength: 1512.12 nm

Index	BIAS	TEMP	TEC
1	144 mA	25.0 °C	72 mA

Index	Power Name	Power Voltage
1	DC +24V	24.2 V

Device Status Page

OMI mode: switch AGC/MGC statuses.

OMI Value: -5 dB to +5 dB adjustable, factory setting is 0 dB.

MGC ATT: 0 dB to 15 dB continuously adjust, 0.1 dBm step 0.1 dB.

ASCENT
Communication Technology

WEB Manager

Device Status
Device Settings
 Alarm Status
 Alarm Properties
 Network Settings
 Change Password
 Reset Settings
 Update Firmware
 Device Logs

Device Settings

Laser Status: Laser ON

Set

OMI Mode: AGC

Set

OMI Value: 0.0 dB (-3.0~3.0)

Set

MGC ATT: 3 dB (0~15)

Set

Channel Number: 84

Set

SBS Value: 16.5 dBm (13.0~19.0)

Set

Device Settings Page

ASCENT
Communication Technology

WEB Manager

Device Status
 Device Settings
Alarm Status
 Alarm Properties
 Network Settings
 Change Password
 Reset Settings
 Update Firmware
 Device Logs

Alarm Status

Index	Parameter Name	Alarm Status
1	Power Supply 1	Nominal
2	Power Supply 2	Nominal
3	Unit Temperature	Nominal
4	RF Input Level	LOLO
5	Laser Current	Nominal
6	Laser Outpower	Nominal
7	Laser Temp	Nominal
8	Laser TEC	Nominal
9	Laser Outpower1	Nominal
10	Laser Outpower2	Nominal
11	RF Input Status	DiscreteMajor
12	DC +24V	Nominal

Alarm Status Page

WEB Manager

Device Status
Device Settings
Alarm Status
Alarm Properties
Network Settings
Change Password
Reset Settings
Update Firmware
Device Logs

Alarm Properties

Index	Parameter Name	HIHI	HI	LO	LOLO	Deadband	Action
1	Unit Temperature (°C)	<input checked="" type="checkbox"/> 85	<input checked="" type="checkbox"/> 70	<input checked="" type="checkbox"/> 5	<input checked="" type="checkbox"/> 0	2	<input type="button" value="Set"/>
2	RF Input Level (dBuV)	<input checked="" type="checkbox"/> 120.0	<input checked="" type="checkbox"/> 110.0	<input checked="" type="checkbox"/> 60.0	<input checked="" type="checkbox"/> 50.0	1.0	<input type="button" value="Set"/>
3	Laser Current (mA)	<input checked="" type="checkbox"/> 1000	<input checked="" type="checkbox"/> 800	<input checked="" type="checkbox"/> 100	<input checked="" type="checkbox"/> 50	5	<input type="button" value="Set"/>
4	Laser Outpower (mW)	<input checked="" type="checkbox"/> 20	<input checked="" type="checkbox"/> 18	<input checked="" type="checkbox"/> 2	<input checked="" type="checkbox"/> 1	1	<input type="button" value="Set"/>
5	Laser Temp (°C)	<input checked="" type="checkbox"/> 35	<input checked="" type="checkbox"/> 32	<input checked="" type="checkbox"/> 18	<input checked="" type="checkbox"/> 15	1	<input type="button" value="Set"/>
6	Laser TEC (mA)	<input checked="" type="checkbox"/> 3000	<input checked="" type="checkbox"/> 2000	<input checked="" type="checkbox"/> -2000	<input checked="" type="checkbox"/> -3000	10	<input type="button" value="Set"/>
7	Laser Outpower1 (dBm)	<input checked="" type="checkbox"/> 15.0	<input checked="" type="checkbox"/> 14.0	<input checked="" type="checkbox"/> 1.0	<input checked="" type="checkbox"/> 0.5	0.1	<input type="button" value="Set"/>
8	Laser Outpower2 (dBm)	<input checked="" type="checkbox"/> 15.0	<input checked="" type="checkbox"/> 14.0	<input checked="" type="checkbox"/> 1.0	<input checked="" type="checkbox"/> 0.5	0.1	<input type="button" value="Set"/>
9	DC +24V (V)	<input checked="" type="checkbox"/> 28.0	<input checked="" type="checkbox"/> 27.0	<input checked="" type="checkbox"/> 21.0	<input checked="" type="checkbox"/> 20.0	0.2	<input type="button" value="Set"/>

Index	Parameter Name	Control	Action
1	Power Supply 1	EnableMajor	<input type="button" value="Set"/>
2	Power Supply 2	EnableMajor	<input type="button" value="Set"/>
3	RF Input Status	EnableMajor	<input type="button" value="Set"/>

Alarm Properties Settings Page

WEB Manager

Device Status
Device Settings
Alarm Status
Alarm Properties
Network Settings
Change Password
Reset Settings
Update Firmware
Device Logs

Network Settings

Device MAC: 00: B9: A0: 14: 15: BD
Update Identifier: OTX138EG01
Agent Version: v1.0.2

Static IP Address:

Subnet Mask:

Default Gateway:

Trap Address 1:

Trap Address 2:

Trap Address 3:

Trap Address 4:

Trap Address 5:

Trap Address 6:

Trap Address 7:

Trap Address 8:

IPv6 Global Unicast

IPv6 Local Link: fe80::2b9:a0ff:fe14:15bd

Trap IPv6 Host1:

Trap IPv6 Host2:

ASCENT
Communication Technology

WEB Manager

- Device Status
- Device Settings
- Alarm Status
- Alarm Properties
- Network Settings**
- Change Password
- Reset Settings
- Update Firmware
- Device Logs

Trap IPv6 Host2:

Trap IPv6 Host3:

Trap IPv6 Host4:

Trap IPv6 Host5:

Trap IPv6 Host6:

Trap IPv6 Host7:

Trap IPv6 Host8:

NTP:

NTP Host:

DNS1:

DNS2:

Read Community:

Write Community:

Trap Community:

SNMP Version:

Heart Beat:

Heart Beat Cycle(ms):

Network Settings Page

ASCENT
Communication Technology

WEB Manager

- Device Status
- Device Settings
- Alarm Status
- Alarm Properties
- Network Settings
- Change Password**
- Reset Settings
- Update Firmware
- Device Logs

Change Password

Username:

Password:

New Username:

New Password:

Confirm Password:

Change Password Page

ASCENT
Communication Technology

WEB Manager

Device Status
 Device Settings
 Alarm Status
 Alarm Properties
 Network Settings
 Change Password
Reset Settings
 Update Firmware
 Device Logs

Restore settings and Reboot device

- Reboot device

Reboot device
- Restore factory settings

Warning!!
Click the restore button, all parameters will be restored to factory default.

Restore Factory
- Restore Net parameters:
 - IP Address: 192.168.0.22
 - Subnet Mask: 255.255.0.0
 - Gateway Address: 192.168.0.1
 - All Trap Address: 0.0.0.0
- User parameters:
 - User name: admin
 - Password: 123456

Restore net

Restore Settings Page

ASCENT
Communication Technology

WEB Manager

Device Status
 Device Settings
 Alarm Status
 Alarm Properties
 Network Settings
 Change Password
 Reset Settings
Update Firmware
 Device Logs

Firmware can be updated [Note:Device will restart.]


浏览...

未选择文件.

Upload files

Warning: do not refresh the page or power off !

Scan QR-code to register the device



Print QR-code

Update Firmware

WEB Manager

Device Status

Device Settings

Alarm Status

Alarm Properties

Network Settings

Change Password

Reset Settings

Update Firmware

Device Logs

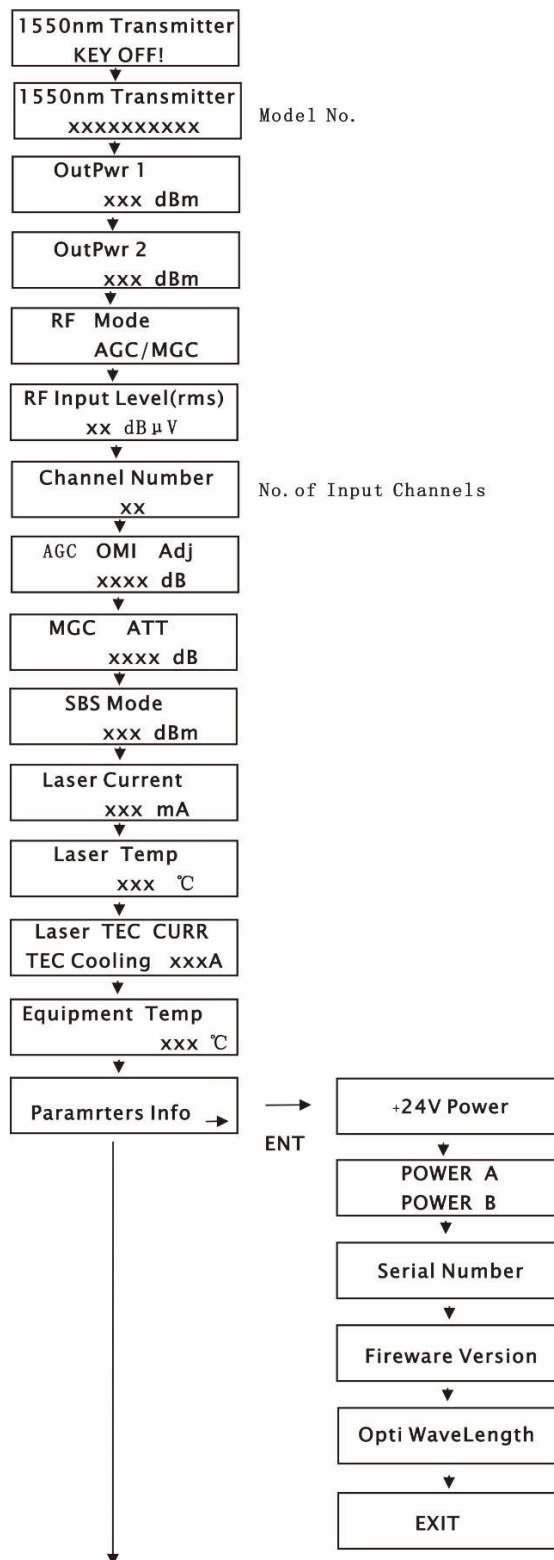
Device Logs
Clear Logs

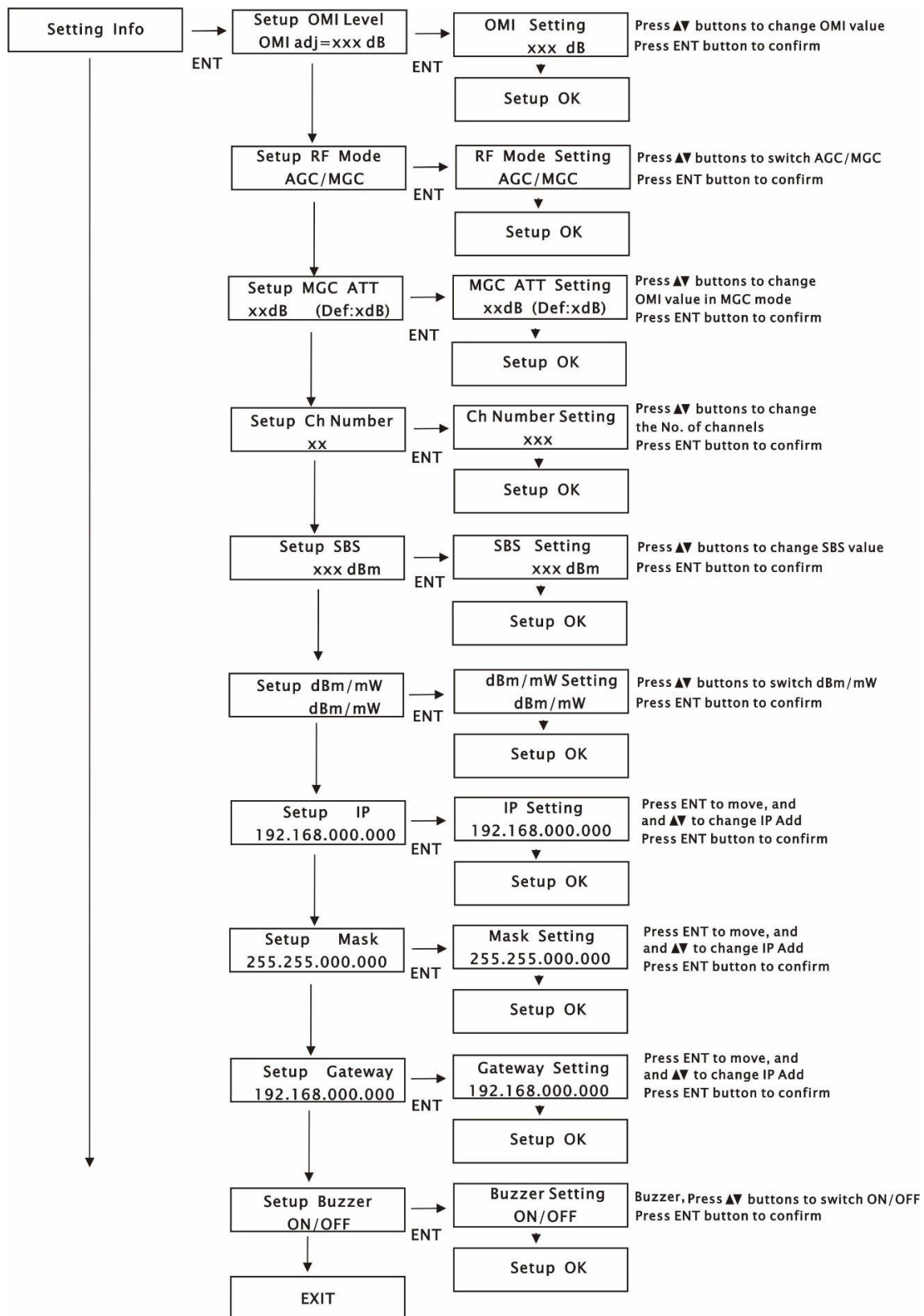
Posix Time	System UpTime	Record Content
2001/1/1 上午8:00:40	00:00:40	Laser Outpower NOMINAL 4mW
2001/1/1 上午8:00:39	00:00:39	Laser Outpower2 NOMINAL 3.9dBm
2001/1/1 上午8:00:39	00:00:39	Laser Outpower1 NOMINAL 4.2dBm
2001/1/1 上午8:00:32	00:00:32	Laser Outpower2 LOLO -3.3dBm
2001/1/1 上午8:00:32	00:00:32	Laser Outpower1 LOLO -3.0dBm
2001/1/1 上午8:00:31	00:00:31	Laser Outpower1 LOLO 1mW
2001/1/1 上午8:00:07	00:00:07	DC +24V NOMINAL 24.2V
2001/1/1 上午8:00:07	00:00:07	Laser Outpower2 NOMINAL 8.7dBm
2001/1/1 上午8:00:07	00:00:07	Laser Outpower1 NOMINAL 9.0dBm
2001/1/1 上午8:00:07	00:00:07	Laser Temp NOMINAL 25°C
2001/1/1 上午8:00:07	00:00:07	Laser Outpower NOMINAL 8mW
2001/1/1 上午8:00:07	00:00:07	Laser Current NOMINAL 145mA
2001/1/1 上午8:00:07	00:00:07	Unit Temperature NOMINAL 18°C
2001/1/1 上午8:00:03	00:00:03	RF Input Status MAJOR
2001/1/1 上午8:00:02	00:00:02	DC +24V LOLO 0V
2001/1/1 上午8:00:02	00:00:02	Laser Outpower2 LOLO 0dBm
2001/1/1 上午8:00:02	00:00:02	Laser Outpower1 LOLO 0dBm
2001/1/1 上午8:00:02	00:00:02	Laser Temp LOLO 0°C
2001/1/1 上午8:00:02	00:00:02	Laser Outpower1 LOLO 0mW
2001/1/1 上午8:00:02	00:00:02	Laser Current LOLO 0mA
2001/1/1 上午8:00:02	00:00:02	RF Input Level LOLO 0dBuV
2001/1/1 上午8:00:02	00:00:02	Unit Temperature LOLO 0°C
2001/1/1 上午8:00:01	00:00:01	DC +24V LOLO 0V
2001/1/1 上午8:00:01	00:00:01	Laser Outpower1 LOLO -99.9dBm
2001/1/1 上午8:00:01	00:00:01	Laser Temp LOLO 0°C
2001/1/1 上午8:00:01	00:00:01	Laser Outpower1 LOLO 0mW

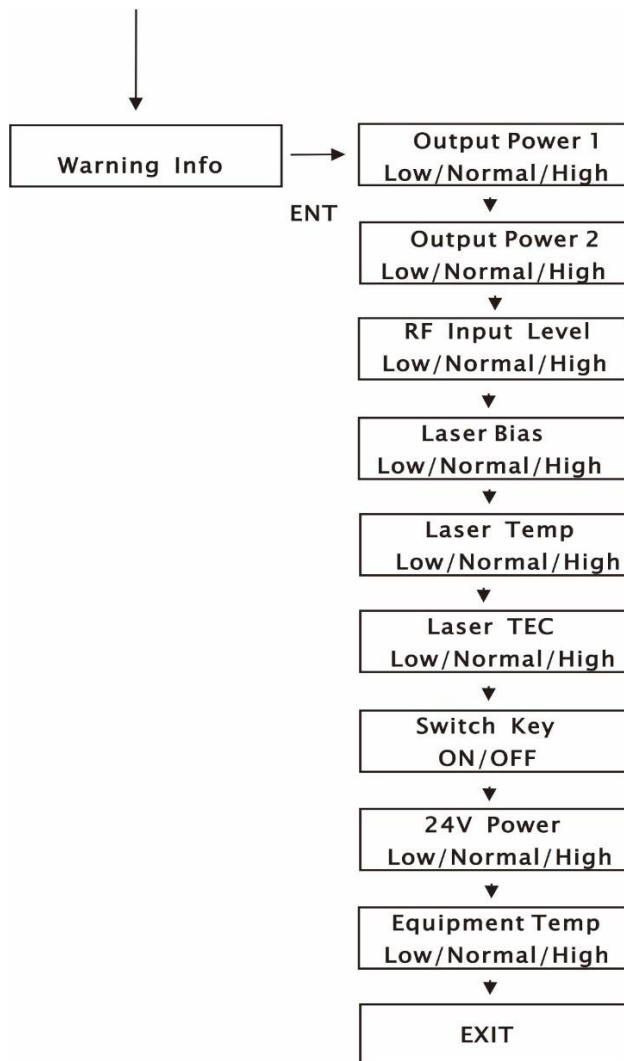
Device Logs

6 Setup Menu

The following menu shows all using the down arrow button; the up arrow button can be reversed.





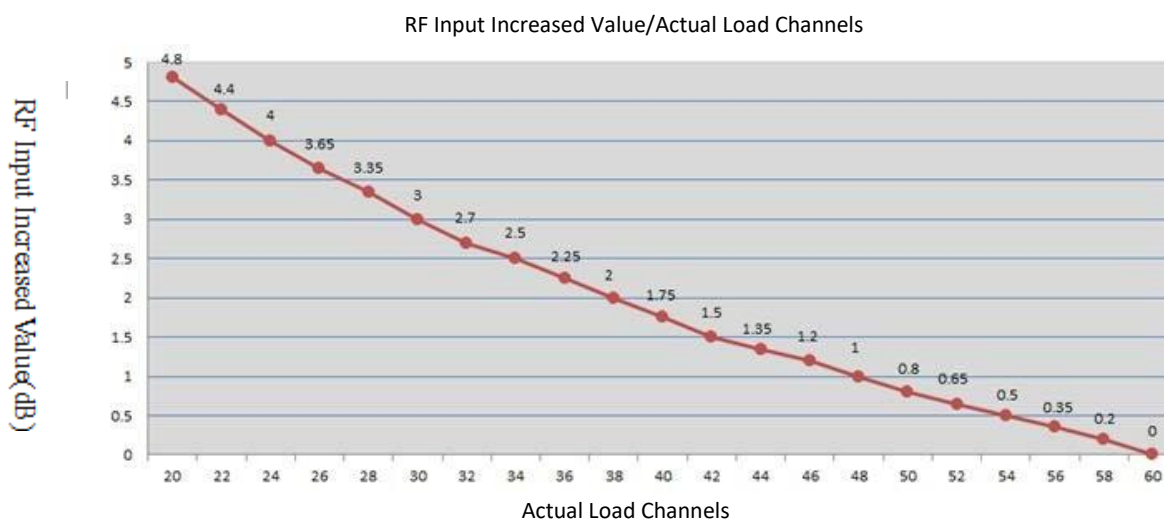


7 OMI Adjustment

7.1 The Request on RF Input Level

The standard RF input is $80 \pm 5 \text{ dB}\mu\text{V}$ in the condition of standard 59 channels, the advised RF steps between channels should be controlled within 0.5dB to get the best parameters

The above advised RF input is based on 59 channels, in the actual application, the load number of channels may change, accordingly, the RF input of each channel will change, pls see the following picture. When the change of RF input changes within 5dB, the optical modulation index will be kept fixed.



When the device on AGC/MGC condition, input level range $75 \text{ dB}\mu\text{V}$ to $85 \text{ dB}\mu\text{V}$

7.2 AGC Condition

The default condition is AGC (the best condition).

The OMI value can be adjusted according to the networks

After increasing the value of OMI, then CNR will be higher, but CTB and CSO will be lower. If reduce the value of OMI, the CNR will be lower, CTB and CSO higher

7.3 AGC/MGC Operation

The AT5000-XMOD2 will be in AGC mode (Automatic Gain Control) when first powered on. To change it to MGC mode (Manual Gain Control), refer to **Section 5.3**.

8 SBS Adjustment Steps

The default value of the SBS is 16.5 dBm , It can be changed according to different request of networks.

8.1 SBS Suppression

The SBS suppression circuitry is based on industry techniques for line-width broadening the source. All of these schemes involve spreading out the optical power so that the optical power in any one region of the optical spectrum does not exceed the threshold at which SBS effects start to become evident.

The SBS suppression of the externally modulated laser transmitter needs to be optimized for the best possible CSO performance. The selected value needs to match the maximum optical drive level in the fiber lines. For short lines this level can be a bit higher than for very long lines. A reduced line drive level together with a reduced SBS suppression threshold in the transmitter increases the maximum achievable system range. The AT5000-XMOD2 incorporates field-selectable SBS thresholds. Ensure that the selected level will match the fiber line drive level as close as practical for best performance.

Follow the steps below to determine the correct SBS value for your optical network.

1. Look at the network design that the TX will be used in and determine the highest optical power launched into the actual transmission fiber. Keep in mind this is not necessarily the launch power out of the EDFA or the power into the passive devices that may be placed ahead of the fiber. If possible, measure the actual power that will be launched into the transmission fiber.
2. After determining the highest value of optical launch power in the network record this value.
3. Now, using the SBS adjust menu on the front panel, set the SBS threshold to this value you have recorded in step 2. Your system is now at its optimized operating point for both CNR (low frequencies) and CSO (high frequencies).
4. If this value is higher than +19 dBm then you will have to add loss to your optical network at this point, the transmitter does not support a SBS level higher than this.
5. If this value is lower than +13 dBm then set the TX to this minimum setting and your network will be at its optimized operating point.
6. To verify that you are not beyond the SBS threshold or that the TX SBS setting is correct, you can measure the CNR at the lowest frequency channel in your system. If the CNR is within specification then you do not have any SBS setting issues.

9 Optimal Input Signal Level

The total RF analog input level depends on the number of analog channels in your system and is identical for the type of system (NTSC, PAL, CENELEC) used. Use the following equation to determine the optimum RF input level per channel when the rated channel loading is not being used:

$$\text{Analog Input Level (dBmV)} = A + 10\log(N/M) + 10\log(W1/W2)$$

A: Manufacturer's recommended nominal drive level for optical transmitter/module;

N: The number of channels corresponding to A;

M: Actual number of loaded channels

W1: The bandwidth corresponding to A;

W2: The actual bandwidth

For example, if the product datasheet give the following parameters:

75 dB μ v @ 59 PAL channels

If the customer actually has: 40 NTSC channels, the drive level will be:

$$\text{Actual drive level} = 75 + 10\log(59/40) + 10\log(8/7) = 75 + 10 \times 1.69 + 10 \times 0.06 = 75 + 1.7 + 0.6 = 77.3 \text{ (dB}\mu\text{V)}$$

For digital channels, if the digital signal level is 6 dB lower than the analog signal level, then 4 digital channels are equal to 1 analog channel; If the digital signal level is 10 dB lower than the analog signal level, then 10 digital channels are equal to 1 analog channel. In the actual calculation, first calculate the number of digital channels as the number of analog channels, and then use the above formula. For example, with 20 analog channels, 20 digital channels, and with the digital channel being 6 dB lower than the analog channel level, then the total number of channels is:

$$20 + 20/4 = 25 \text{ (channels)}$$



Ascent Communication Technology Ltd

AUSTRALIA

140 William Street, Melbourne
Victoria 3000, AUSTRALIA
Phone: +61-3-8691 2902

CHINA

Unit 1907, 600 Luban Road
200023, Shanghai CHINA
Phone: +86-21-60232616

EUROPE

Pfarrer-Bensheimer-Strasse 7a
55129 Mainz, GERMANY
Phone: +49 (0) 6136 926 3246

WEB: www.ascentcomtec.com

HONG KONG SAR

Unit 9, 12th Floor, Wing Tuck Commercial Centre
177 Wing Lok Street, Sheung Wan, HONG KONG
Phone: +852-2851 4722

USA

2710 Thomes Ave, Cheyenne
WY 82001, USA
Phone: +1-203 816 5188

VIETNAM

15 /F TTC Building, Duy Tan Street, Cau Giay Dist.
Hanoi, VIETNAM
Phone: +84 168 481 8348

EMAIL: sales@ascentcomtec.com

Specifications and product availability are subject to change without notice.
Copyright © 2023 Ascent Communication Technology Limited. All rights reserved.
Ver. ACT_1RU_AT5000_XMOD2_QRG_V1i_Dec_2023